



Department of
Environmental
Conservation

DECinfo Locator

A new way to find DEC information

October 2019

Project Goal

Create a **user-friendly**, map interface where the user can easily locate **DEC documents and information** about the **environmental quality** of specific sites, as well as **outdoor recreational** opportunities.



Increase Transparency

Access to Documents and Data



One Map- Two Views



Department of
Environmental
Conservation



DECinfo Locator

Base Map:

Search

Tools

DEC Information Layers

Environmental Quality

Outdoor Activity

Permits and Registrations

☐ Check / Uncheck all☐ Municipal Separate Storm Sewer System (MS4)☐ MS4 Extended☐ Hazardous Waste Treatment, Storage & Disposal Facilities☐ Title V Air Facility☐ Air State Facility☐ Hazardous Waste Reduction Planning Program Generators☐ Wastewater Facilities☐ Multi-Sector General Permits (MSGP)☐ Petroleum Bulk Storage Facilities

Environmental Cleanup

Environmental Monitoring

Public Involvement

Environmentally Sensitive Areas

Legal Information

Reference Layers

Scroll bar if
long list of
layers

DEC Information Layers

Environmental Quality

Outdoor Activity

Permits and Registrations

Environmental Cleanup

Environmental Monitoring

Public Involvement

Environmentally Sensitive Areas

Legal Information

☐ Check / Uncheck all☐ Permit and Enforcement Hearings (2017 - 2019 YTD)☐ Orders on Consent (2019 YTD)

Search

Tools

DEC Information Layers

Environmental Quality Outdoor Activity

Land-related Activities

☐ Check / Uncheck all

Symbols with a blue halo denote accessibility.

☐ DEC Lands

☐ Conservation Easements

☐ DEC Recreational Assets

Fire Tower

Fishing

Lean-to

Parking

Picnic Area

Primitive Campsite

Scenic Vista

Viewing Area

Campgrounds

Trails

Water-related Activities

Reference Layers

Scroll bar if long list of layers



Environmental Quality Outdoor Activity

Land-related Activities

Campgrounds

Trails

Water-related Activities

☐ Check / Uncheck all

Symbols with a blue halo denote accessibility.

☐ Shellfish Harvest Zones

☐ Shellfish Closures

Temporary Shellfish Closures

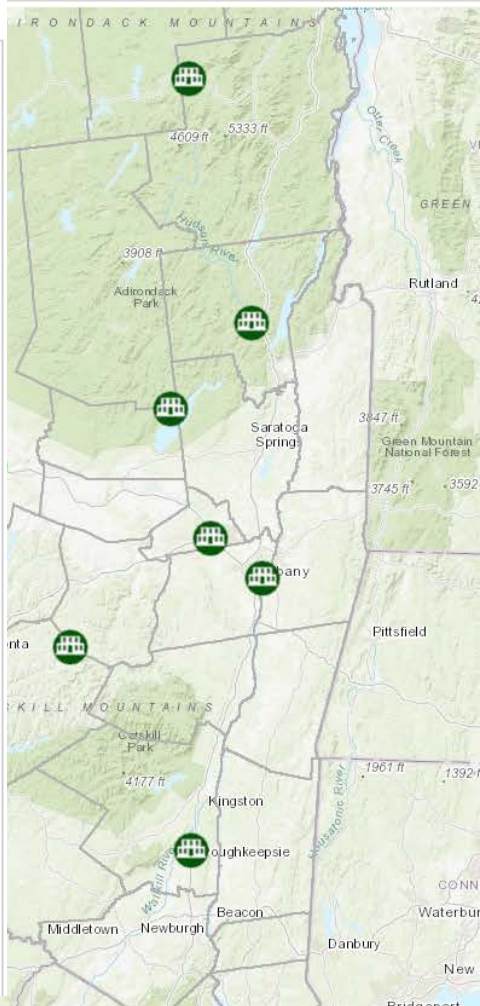
☐ Marine Access Sites

☐ Boat Launch Sites (Fish and Wildlife Mgmt.)

Hand Launch

Trailered Launch

☐ Public Fishing Rights



Environmental Quality

- **Permits and Registrations (15)**
- **Environmental Cleanup (2)**
- **Environmental Monitoring (7)**
- **Public Involvement (7)**
- **Environmentally Sensitive Areas (2)**
- **Legal Information (2)**



Outdoor Activity

- Land-related Activities (6)
- Campgrounds (4)
- Trails (7)
- Water-related Activities (5)



Core Functionality



Search or Zoom to Area

DECinfo Locator Base Map: Topographical

Search
Tools
DEC Information Layers

Environmental Quality Outdoor Activity

Permits and Registrations

☐ Check / Uncheck all

- ☐ Municipal Separate Storm Sewer System (MS4)
 - ☐ MS4 Extended
- ☐ Hazardous Waste Treatment, Storage & Disposal Facilities
- ☐ Title V Air Facility
- ☒ Air State Facility
- ☐ Hazardous Waste Reduction Planning Program Generators

A blue arrow points to the 'Air State Facility' checkbox in the left sidebar.

The map displays a topographical view of the Hamilton, New York area. A large blue arrow points to the Hamilton location on the map, which is marked with a purple icon representing an Air State Facility. Other locations shown include Cazenovia, Morrisville, Waterville, Oneida, Herkimer, Cortland, Middleport, and Norwich. The map includes a search bar, zoom controls (+, -, home, and refresh), and a base map selector set to 'Topographical'.

DECinfo Locator

Bas

Search

Search by Location

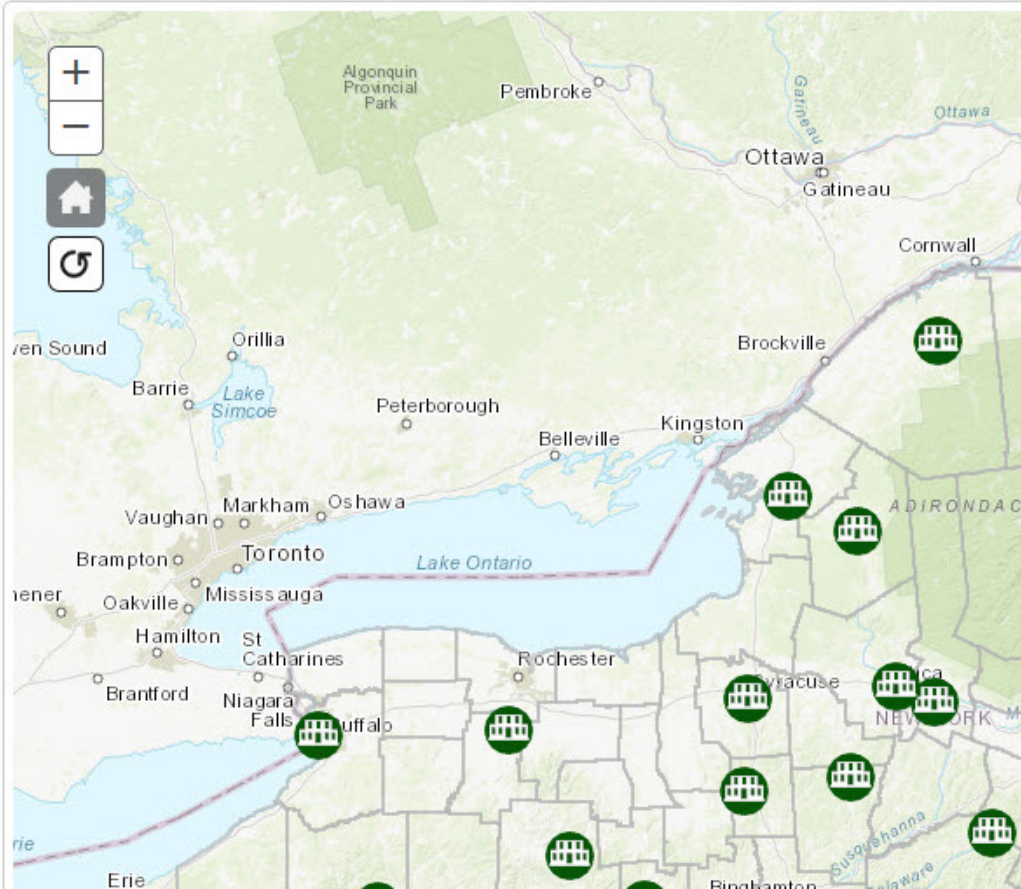
Search Results

Addresses

Hoosick, New York

- ☒ Address
- ☐ Municipalities
- ☐ Place Names
- ☐ Counties

Various search
options



Icon Pop-up Box

Deep link into
online Registry
record

NEW YORK STATE DEPARTMENT OF ENVIRONMENTAL CONSERVATION

[Home](#) » [Mining and Reclamation Home](#) » [Mined Land Reclamation Searchable Database](#) » [Mines Data Search](#)

Search Parameters: [\[Go Back\]](#)

- Mine ID like 70077

[Export XLS](#) [Export CSV](#) [Export KML](#)

Record Count: 1 Rows: 1 to 1

Mine ID	Permittee Name	Mine Name	First Name	Last Name	Address 1	Address 2	City	State	Zip 1	Zip 2	Phone	Status
70077	T H Kinsella Inc	Kinsella Quarry - NYS Route 5	Thomas	Kinsella	PO Box 7		Fayetteville	NY	13066		(315) 637-3390	Permitted

Record Count: 1 Rows: 1 to 1

[Export XLS](#) [Export CSV](#) [Export KML](#)



Department of
Environmental
Conservation

DECinfo Locator




Search

Tools

DEC Information Layers

Environmental Quality Outdoor

Permits and Registrations

☐ Check / Uncheck all☐  Municipal Separate Stormwater (MS4)☐  MS4 Extended☐  Hazardous Waste Treatment, Storage, and Disposal Facilities☒  Title V Air Facility☐  Air State Facility☐  Hazardous Waste Reduction Program Generators☐  Wastewater Facilities☐  Multi-Sector General Permit**New York State Department of Environmental Conservation**
Facility DEC ID: 7313800015**PERMIT**
Under the Environmental Conservation Law (ECL)**IDENTIFICATION INFORMATION**

Permit Type: Air Title V Facility
Permit ID: 7-3138-00015/00020
Effective Date: 11/03/2006 Expiration Date: 11/01/2011

Permit Issued To: L & J G STICKLEY INC
PO BOX 480
MANLIUS, NY 13104-0480

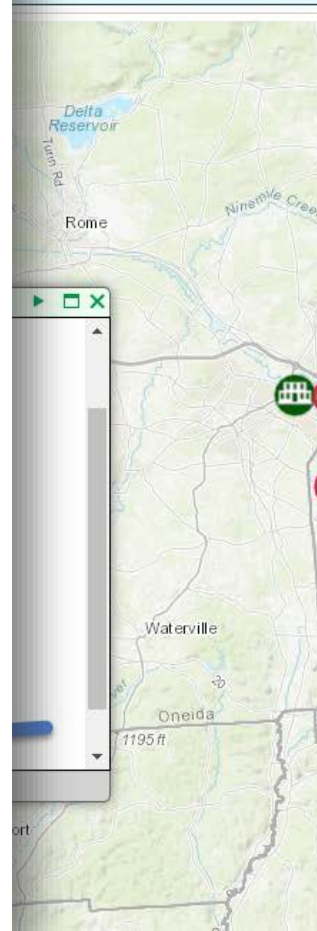
Contact: ALFRED J AUDI
L. & J. G. STICKLEY, INC.
STICKLEY DRIVE, PO BOX 480
MANLIUS, NY 13104

Facility: L & J G STICKLEY INC
1 STICKLEY DR
MANLIUS, NY 13104

Contact: JUSTIN S DUSSEAU
L & J G STICKLEY INC
1 STICKLEY DR PO BOX 480
MANLIUS, NY 13104-0480
(315) 682-5500

Description:

By acceptance of this permit, the permittee agrees that the permit is contingent upon strict compliance with the ECL, all applicable regulations, the General Conditions specified and any Special Conditions



File Edit View History Bookmarks Tools Help

DECinfo Locator x Index of /data/IF/SPDES/NY021 x SENYStormwaterConf2019_HV x

https://www.dec.ny.gov/data/IF/SPDES/NY0212245/

Most Visited Build your modern int...

DECinfo Locator

Search

Tools

DEC Information Layers

Environmental Quality Outdoor

Permits and Registrations

☐ Check / Uncheck all

☐ Municipal Separate Storm (MS4)

☐ MS4 Extended

☐ Hazardous Waste Treatment Disposal Facilities

☐ Title V Air Facility

☐ Air State Facility

☐ Hazardous Waste Reduction Program Generators

☒ Wastewater Facilities

☐ Multi-Sector General Permit

Environmental Cleanup

Environmental Monitoring

Public Involvement

Environmentally Sensitive Areas

Legal Information

Reference Layers

Index of /data/IF/SPDES

Name
Permit.IndSPDES.NY0212245.2013
Permit.IndSPDES.NY0212245.2018

New York State Department of Environmental Conservation

Division of Environmental Permits

NYSDEC HEADQUARTERS
625 BROADWAY
ALBANY, NY 12233
(518) 402-9167

SPDES PERMIT RENEWAL

8/30/2017

Permittee Name: ALBANY COUNTY AIRPORT
AUTHORITY
Facility Name: ALBANY INTERNATIONAL AIRPORT
Ind. Code: 4581 **County:** ALBANY
DEC ID: 4-0126-00140/00003 **SPDES No.:** NY0212245
Permit Effective Date: 3/1/2018
Permit Expiration Date: 2/28/2023

STEPHEN IACHETTA
ALBANY INTERNATIONAL AIRPORT
ADMINISTRATION BUILDING STE 200
ALBANY NY 12211-1057

Dear Permittee,

The State Pollutant Elimination System (SPDES) permit renewal for the facility referenced above is approved with the new effective and expiration dates. This letter together with the previous valid permit for this facility effective on 03/13/2013 and any subsequent modifications constitute authorization to discharge wastewater in accordance with all terms, conditions and limitations specified in the previously issued permit(s).

As a reminder, SPDES permits are renewed at a central location in Albany in order to make the process more efficient. All other concerns with your permit, including applications for permit modification or transfer to a new owner, a name change, and other questions, should be directed to:

Regional Permit Administrator
NYSDEC Region 4 Headquarters
1130 N Westcott Rd
Schenectady, NY 12306
(518) 357-2452

If you have already filed an application for modification of your permit, it will be processed separately by that office.

Tools

**Area Measure, Distance,
Near Me**



**Department of
Environmental
Conservation**

Choose Layers


DEC Information Layers


Environmental Quality

Outdoor Activity

Permits and Registrations

☐ Check / Uncheck all

☒  **Municipal Separate Storm Sewer System (MS4)**


☐  MS4 Extended

☐  Hazardous Waste Treatment, Storage & Disposal Facilities


☐  Title V Air Facility

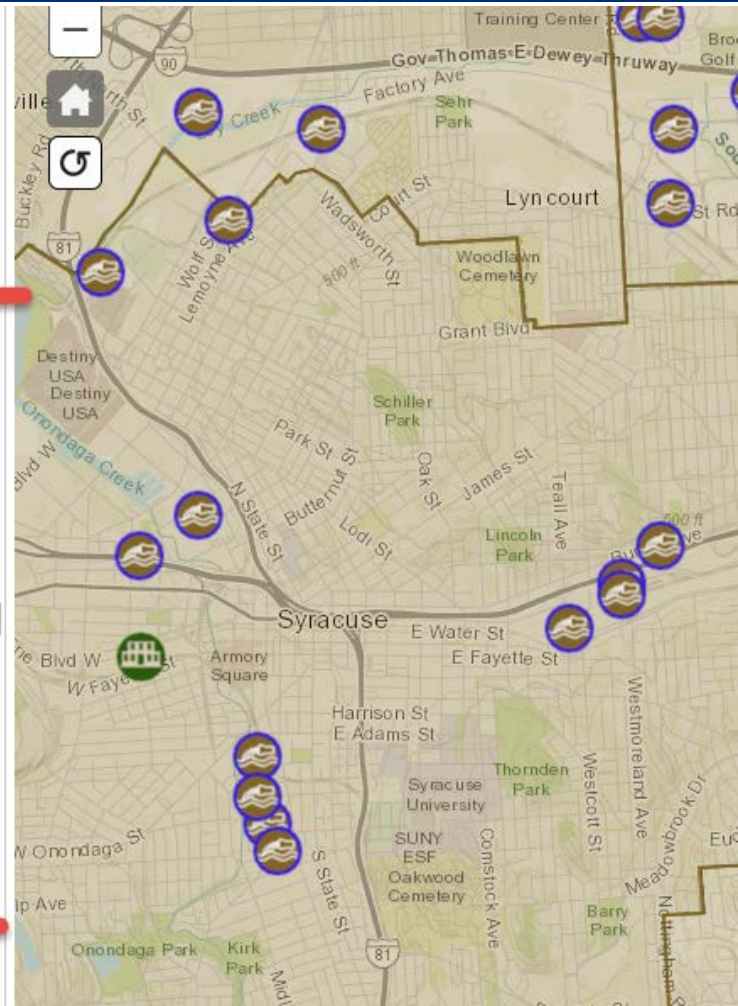
☐  Air State Facility

☐  Hazardous Waste Reduction Planning Program Generators

☐  Wastewater Facilities

☒  **Multi-Sector General Permits (MSGP)**

☐  Petroleum Bulk Storage Facilities





DECinfo Locator

Search

Tools



Measurement Tool

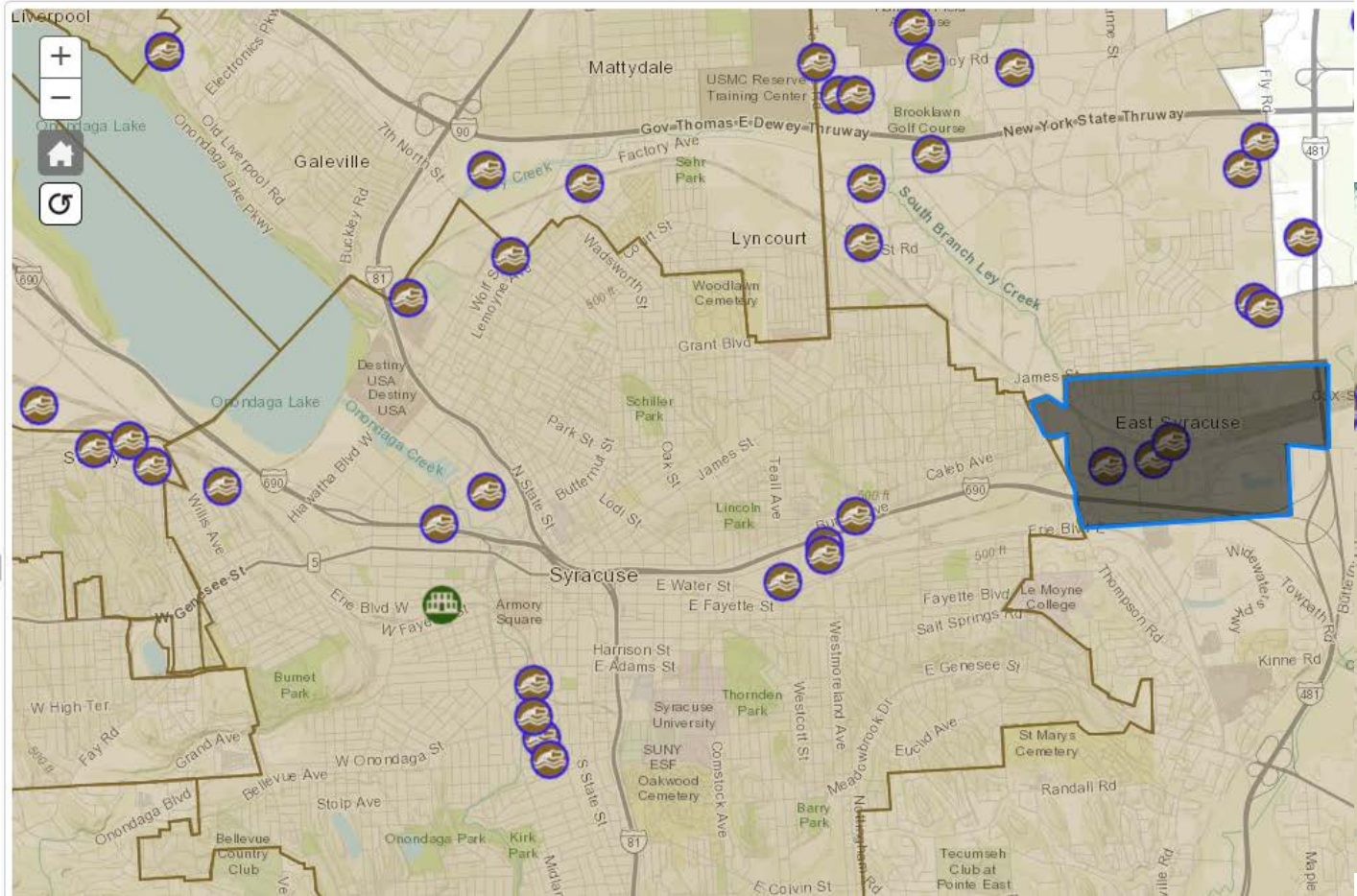
Acres ▾

Measurement Result

982.9 Acres

Clear Result

The measurement tool is currently active. To interact with map features, deactivate it above.



Distance- measure between two points

NEW YORK STATE DEPARTMENT OF ENVIRONMENTAL CONSERVATION



DECinfo Locator

Search

Tools



Measurement Tool

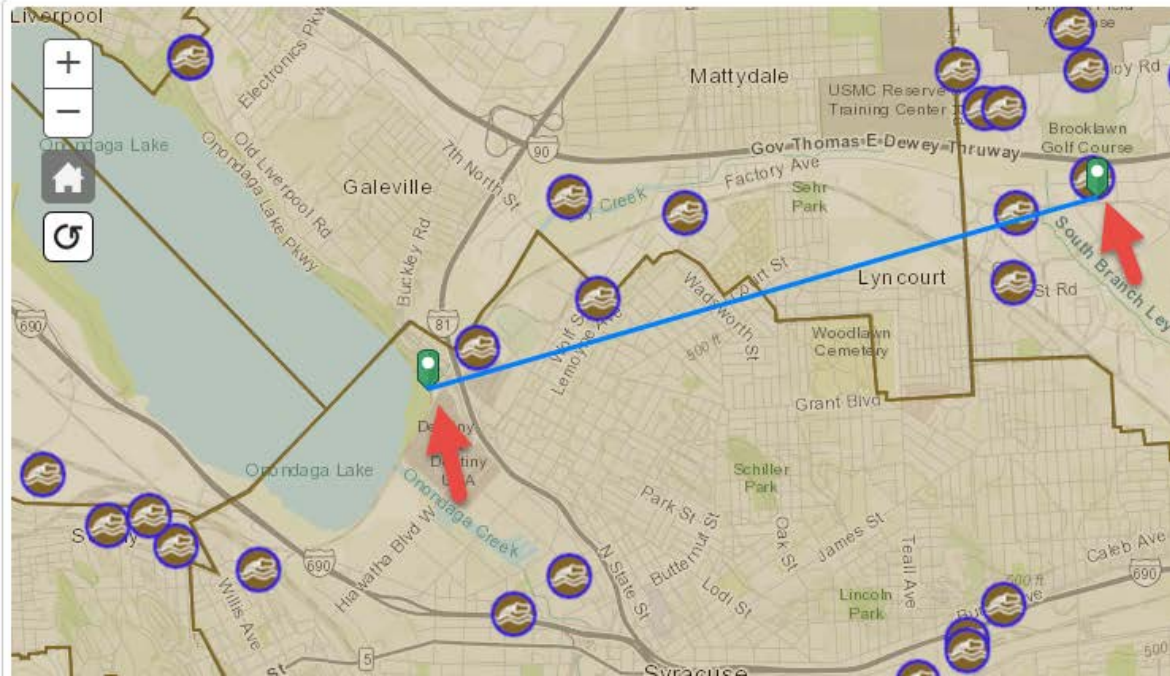


Measurement Result

3.84 Miles

Clear Result

The measurement tool is currently active. To interact with map features, deactivate it above.





DECinfo Locator

Base Map: Topographical

Help

Search

Tools



Near Me Tool

Click on the map to select a point and choose a search radius. (Miles)

1 2 3 4 5 6 7 8 9 10

Municipal Separate Storm Sewer System MS4

1: NYR20A186

2: NYR20A156

3: NYR20A348

MS4 Extended

1: DEWITT

2: DEWITT

3: EAST SYRACUSE

4: SYRACUSE

4

MultiSector General Permits MSGP

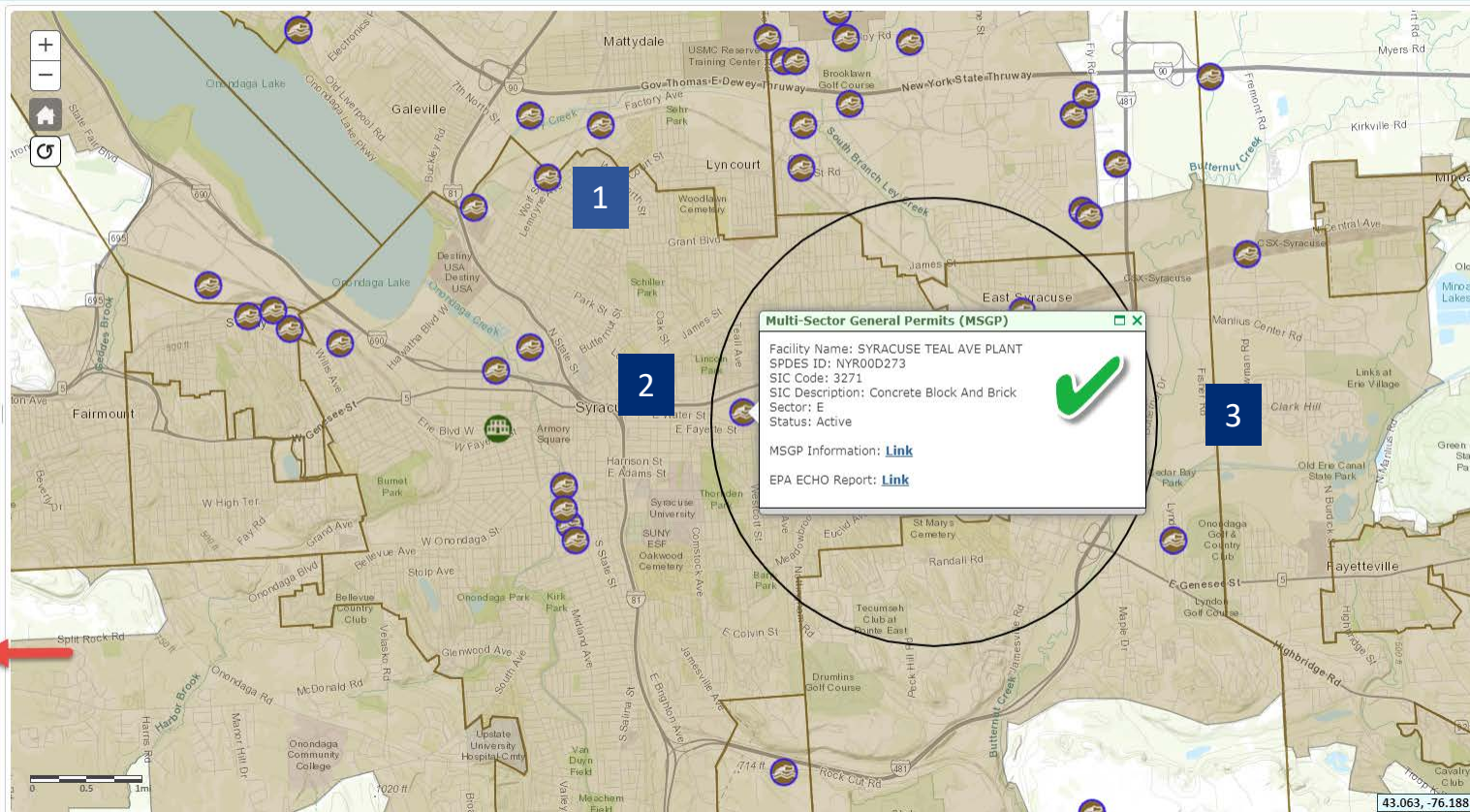
1: SYRACUSE TEAL AVE PLANT

2: TRANSFLO SYRACUSE TERMINAL

3: DEWITT YARD - PEAT STREET

DEC Information Layers

Reference Layers



Department of Environmental Conservation

[Recreation](#)[Nature](#)[Prevent & Control Pollution](#)[Regulatory](#)[News & Learning](#)[Search](#)

[Home](#) » [Lands and Waters](#) » [Forests](#) » [State Forests](#) » [List of State Forests](#) » [Stoney Pond State Forest](#)

Stoney Pond State Forest



- **Open for recreation:** Year-round.
- **Fee:** Free
- **Contact Information**
 - DEC Region Sherburne 7 Office: (607) 674-4017, M-F (8am - 4pm); email R7Forestry@dec.ny.gov
 - Emergency, Law Enforcement & Rangers: (518) 408-5850 or 911
- **Location:** Town of Nelson, Madison County
- **Wildlife Management Unit:** 7M
- **Map:** [View Stoney Pond State Forest Map](#) || [View Same Map in PDF](#) || [View Campground Map in PDF](#) || [Google Earth](#) || [DECinfo Locator](#)



Stoney Pond State Forest consists of 1,469 acres and offers visitors an opportunity to view a range of different flora and fauna. The 44-acre Stoney Pond was constructed in the late 1950s to provide wildlife habitat.

Featured Activities

Paddling



General information on paddling includes how-to and safety tips and links to rules and regulations.

A parking area and hand launch site is located on the pond. No gas powered motors are permitted. A day use area is located adjacent to the ramp.

Important Links

[Hiking Safety](#)[Hiking and Camping Rules](#)

Links Leaving DEC's Website

[State Land Use Regulations](#)[Madison County Tourism Office](#)

PDF Help

For help with PDFs on this page, please call 607-674-4017.

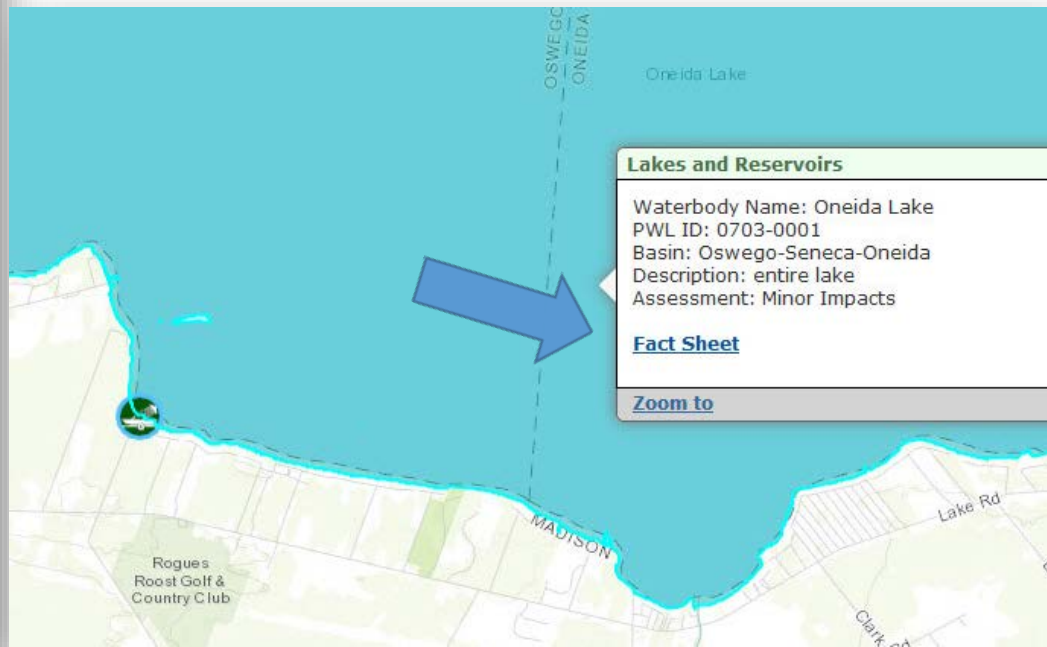
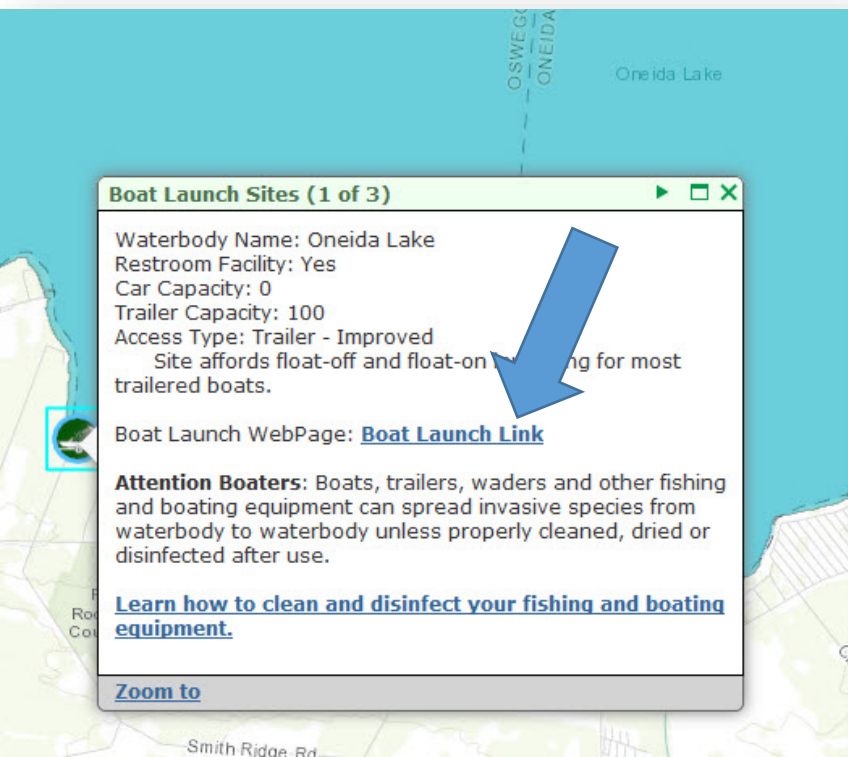
Contact for this Page

NYSDEC Region 7
Sherburne Sub-office
2721 State Hwy 80
Sherburne, NY 13460
607-674-4017
[Send us an email](#)

This Page Covers



Outdoor Activity and Environmental Quality Together



Department of Environmental Conservation

[Recreation](#)
[Nature](#)
[Prevent & Control Pollution](#)
[Regulatory](#)
[News & Learning](#)
[Search](#)

DECinfo Locator

[DECinfo Locator Layers](#)
[Home](#) » [Publications, Forms, Maps](#) » [Maps](#) » [Interactive Online Maps](#) » DECinfo Locator

DECinfo Locator

Click to launch the DECinfo Locator Map - search or zoom into the map until the layer list names turn black.

DECinfo Locator is an interactive map that lets you access many DEC documents and public data about the environmental quality of specific sites in New York State, as well as information about sites for outdoor recreation. With more than 50 data layers available, this is the first application that shows both environmental quality monitoring and natural resource information together in one place.

This tool and available information are maintained by the New York State Department of Environmental Conservation. **Icons represent the availability of information, not necessarily the presence of a problem.**

Feedback survey

Tell Us What You Think

Please take our [short feedback survey](#) so we can continue making improvements. More information layers will be continuously be added, so let us know which ones you would like included.

How to Use the Map

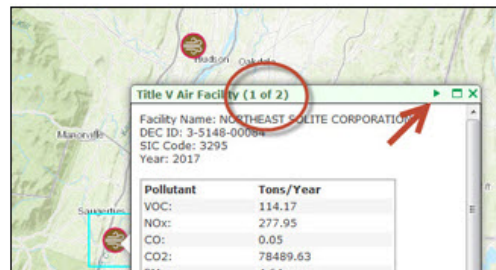
*****Be sure to search for a location or zoom into an area of the map until the layer list names turn black.** You can then activate the layers you want and icons will appear on the map.





- [Help Video \(YouTube\)](#) * **Good resource before getting started**
- [Help Document \(PDF\)](#)

Find on this Page

[How To Use the Map](#)
[Terms and Conditions for Using Map](#)
[Why Many Icons](#)
[Contact Us/Report Data Problems](#)
[Other GIS Resources](#)
[Links Leaving DEC's Website](#)
[Launch DECinfo Locator Map](#)
[Feedback Survey](#)
[Contact for this Page](#)

Office of
Communication
Services
625 Broadway
Albany, NY
12233-4500
518-402-8013
Send us an email

[This Page Covers](#)


 Disposal Facilities (TSDs)	storage, or disposal and are usually referred to as TSDFs.	link to more information	AS needed
 Air State Facility Permits (ASF)	<p>State Facility Permits are issued to facilities considered to be mid-sized. They have lower potential emissions, fewer permit requirements than Title V facilities, and they meet the criteria of Subpart 201-5.</p>	Issued per	Daily
 Air Title V Permits (ATV)	<p>Title V Permits are issued to facilities that are major sources of air emissions. These facilities are usually considered to be the largest in the state and meet the criteria of Subpart 201-6.</p>	Issued permit and permit review report	Daily
 Hazardous Waste Reduction Planning Program Generators	Facilities that release hazardous wastes and toxic substances into the environment must reduce, to the maximum extent possible, the volume or quantity and toxicity of waste. Facilities that generate 25 tons or more of certain hazardous wastes per calendar year are subject to the law and must submit a hazardous waste reduction plan update annually.	Facility name, type, EPA ID, and link to more information	Annually

Upcoming Enhancements

Layer Info Bubbles 

More Data Layers

Separate Recreational Assets

Downloadable Data Sets?

- Not yet. Use:
- Open NY Data Portal- <https://data.ny.gov/>
- NYS GIS Clearinghouse- <https://gis.ny.gov/>



Thank You

Cathy.Kittle@dec.ny.gov

Scott.Donnelly@dec.ny.gov

518-402-8013

DECInfoLocator@dec.ny.gov

Connect with us

www.facebook.com/NYSDEC

twitter.com/NYSDEC

www.instagram.com/nysdec/

www.linkedin.com

<https://on.ny.gov/DECinfoLocator>



Department of
Environmental
Conservation