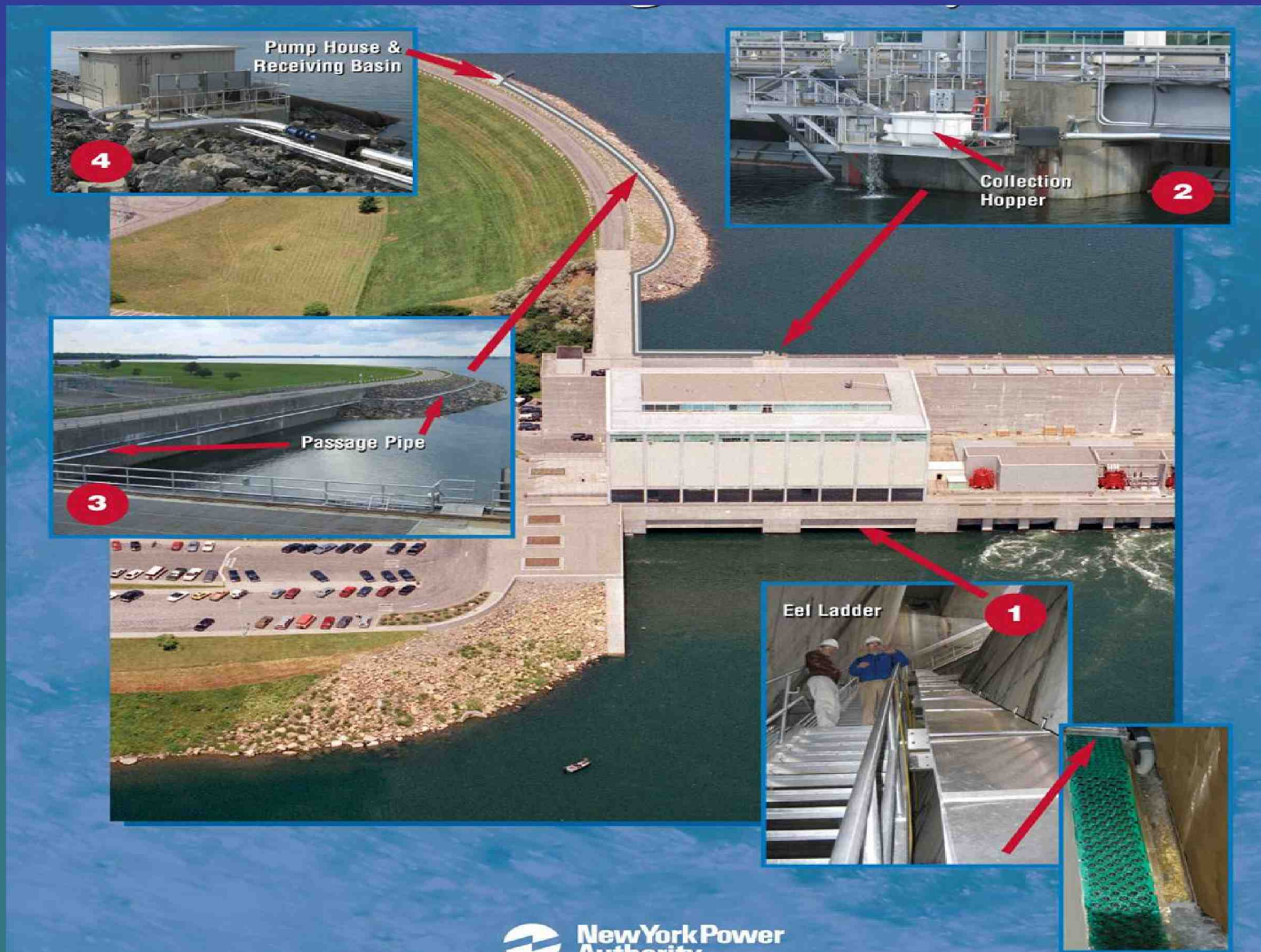




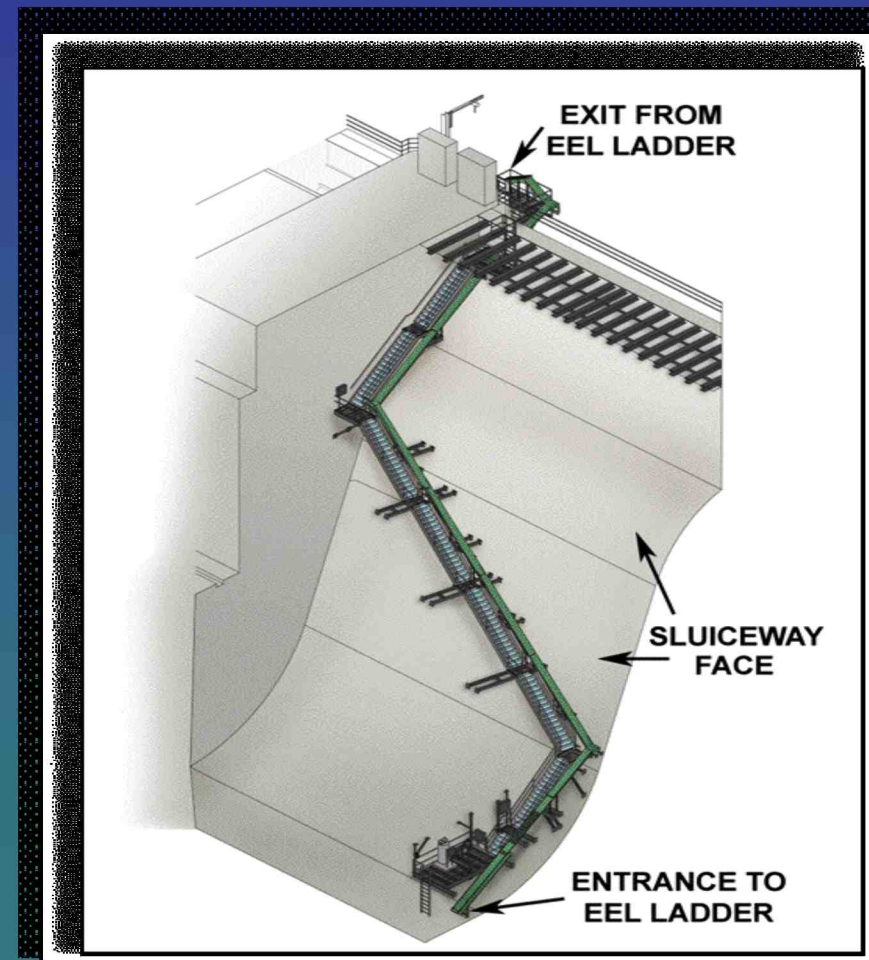
St. Lawrence-FDR Power Project Environmental Projects

Upstream Eel Passage

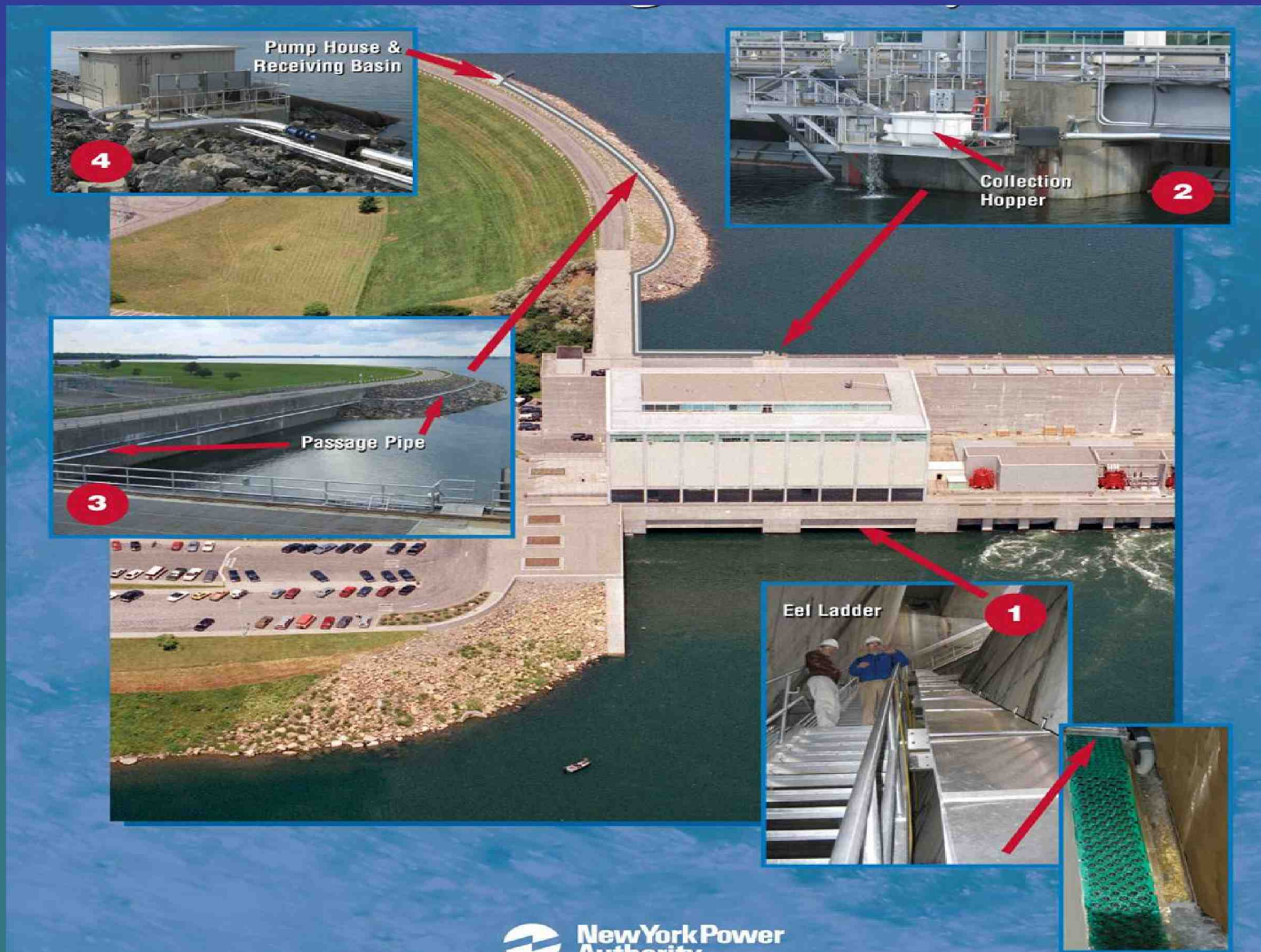


Upstream Eel Passage

Young eels climb up the “Ladder” section to get from the downstream side to the upstream side of the dam.



Upstream Eel Passage



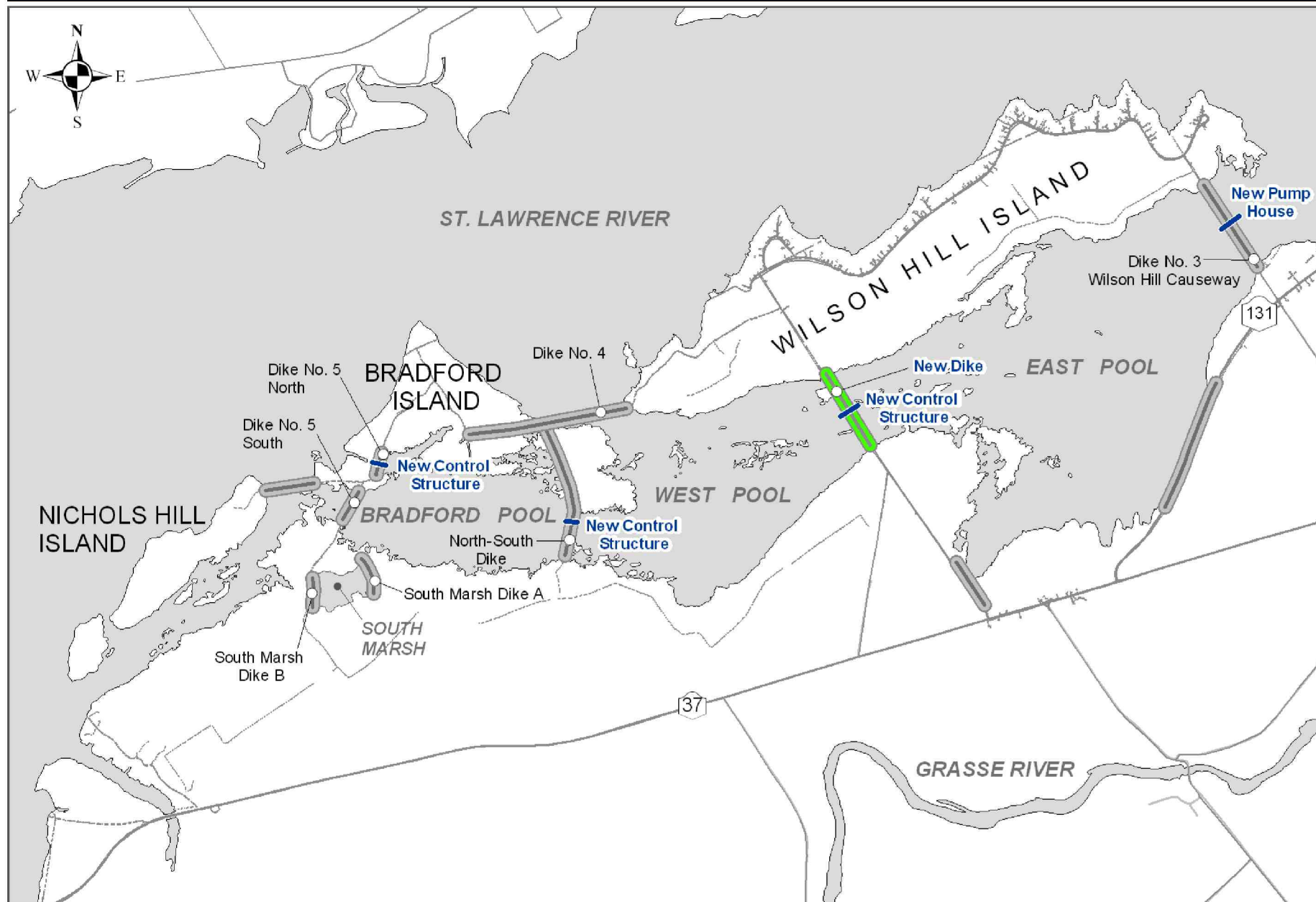
Eel-Passage – 2008

- Third year in operation
- About 25,500 eels climbed the ladder (July to date); best year yet
- About 1 hour to climb ladder; about 83% successfully complete the climb
- About 30 minutes to travel through pipe, 100% efficiency

Wilson Hill Wildlife Management Area Improvements

- 3,300-acre area created by NYPA in 1950's
- Improvements will:
 - Rehabilitate dikes
 - Improve ability to control water levels to meet natural resource goals
 - Increase recreational opportunities
- Construction began in 2007 and is expected to be completed by 2010

WILSON HILL WILDLIFE MANAGEMENT AREA IMPROVEMENTS



Wilson Hill Wildlife Management Area Rehabilitated Dike



Wilson Hill Wildlife Management Area Water Control Structure



Habitat Improvement Projects

- 10 habitat improvement projects (HIPs)
- HIPs developed in consultation with Technical Advisory Council including U. S. Fish & Wildlife Service, DEC, St. Regis Mohawks, environmental groups, and local governments
- \$4 million fund for future HIPs in consultation with Technical Advisory Council

Osprey Nesting Platforms (10)

- Three installed in 2004
- 2008 – Nests on two platforms with 5 chicks fledged
- Three more platforms will be proposed for 2009



Common Tern Nesting Program

- Goal: 1400 nesting pairs on Lake St. Lawrence, from 400 pairs
- Most nesting on navigation cells
- 9 cell enhanced in 2005; added 60 nesting pairs
- Next enhancements – depends on usage of first 9



Common Loon Nesting Platforms (5)

- 5 floating platforms installed in 2006
- No usage from 2006 to 2008
- Platforms may be moved to new locations in 2009



Grassland Bird Nesting Habitat (568 Acres, Waddington)

- Manage areas on Whitehouse Point (129 acres) and Ogden Island (439 acres) for nesting by grassland birds including RTE species
- Distinct areas established (fencing) in 2005
- Managed by rotational grazing/mowing (2006 – 2008)
- Nesting by grassland birds but no nesting of RTE species



Coles Creek – Fisheries (Louisville)

- Fish enter Creek in spring to spawn
- Create notch in weir to assure access at low water levels
- Completed December 2006



Coles Creek Wetland (Louisville)

- Improve 1500 feet of unvegetated shoreline
- Contour shoreline and plant native wetland vegetation (2007)
- Vegetation well developed
- Invasive species control throughout Creek (2008)



Blandings Turtle Nesting (Louisville)

- Cleared 6 acres of land near Coles Creek to create nesting habitat for turtle (2006)
- No nesting in cleared area for 2007
- 6 documented nests in cleared area for 2008 along with 5 nests in adjacent area



Tu

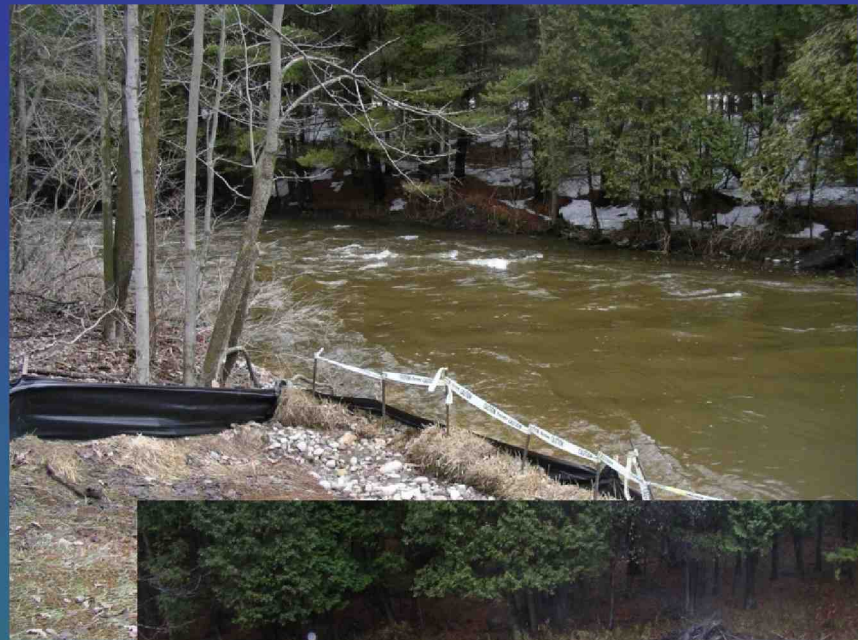
Sturgeon Spawning Beds (6 Beds)

- Install gravel beds for additional spawning area for sturgeon
- 2 beds installed in 2007
- Eggs laid and larvae collected
- Remaining 4 beds will be installed at future date



Walleye Spawning Bed (Louisville)

- Enhancement of existing spawning area in Brandy Brook through placement of gravel & rocks
- Installed in 2007
- Eggs laid and larvae collected in enhanced areas



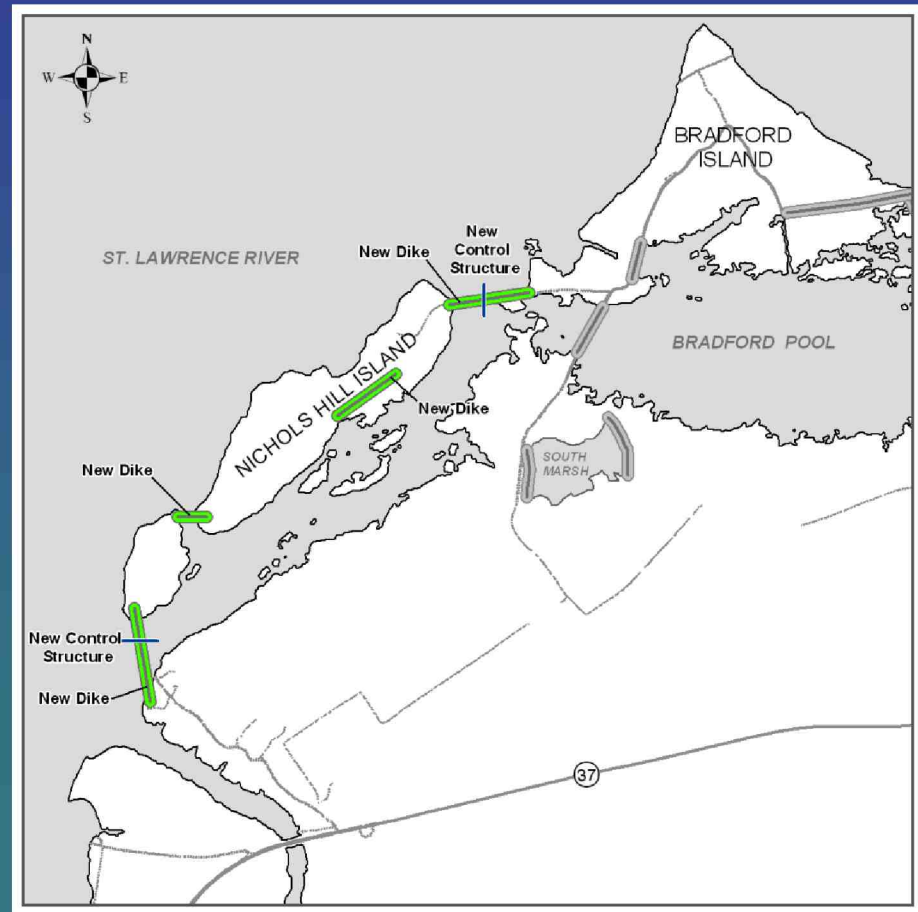
Little Sucker Brook Pond (Waddington)

- Improve/diversify existing wetland
- Fish way to provide access to pond
- Pump water from Little Sucker Brook to Pond – control water levels to manage wetland vegetation
- Scheduled for 2009



Nichols Island Controlled Level Pond (Louisville)

- Impound 185 acres to develop managed wetland with fish spawning and nursery habitat.
- Control structures for passage of water and fish into and out of Pond.
- Scheduled for 2009



Fish Enhancement, Mitigation, and Research Fund

- U. S. Fish & Wildlife Service (FWS) administers Fund (\$24 million) in consultation with Fisheries Advisory Committee
- Purpose: provide mitigation for impacts to fish resources (Lake Ontario/St. Lawrence basin) and continue research on American eel and other species that may be affected by Project
- Seven (7) projects funded to date (\$628,200 with \$911,400 in matching funds)
- A 5-year program for downstream eel passage research is beginning
- Programs for other fish species are beginning

St. Lawrence River Research and Education Fund

- \$1 million fund to provide funds for environmental research and environmental education projects related to St. Lawrence River ecology
- Beginning in 2008, Board has awarded funds for 5 projects totaling \$80,191

Waddington Town Beach



Massena Intake Boat Launch



Hawkins Point Visitors Center, Boat Launch and Fishing Pier



Robert Moses State Park New Bathhouse



Coles Creek State Park New Entrance

